

How to Enable MotoPlus

Controller Settings

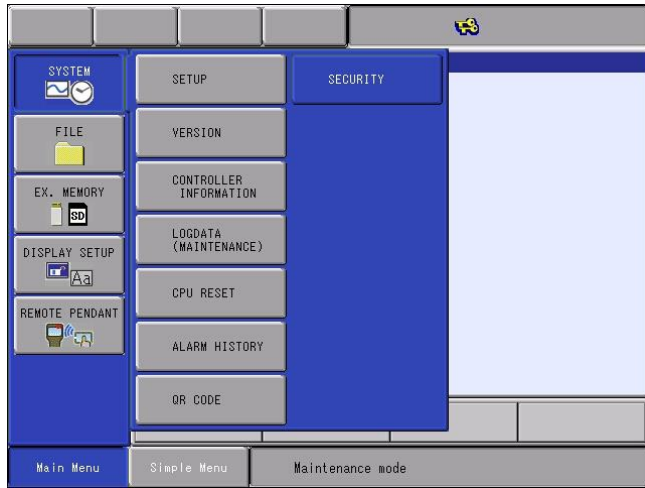
To enable MotoPlus take the following steps:

1. Boot the controller into Maintenance mode by holding down the MAIN MENU key on the pendant while turning on controller power. Release the MAIN MENU button only after you hear a beep or at least 10 seconds has passed. If done correctly, you will see the following screen with “Maintenance mode” displayed in the message display bar.

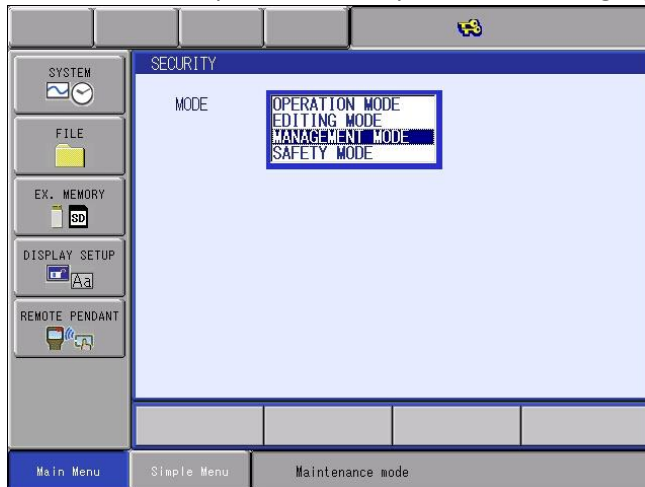


This document captures ideas, experiences, and informal recommendations from the Yaskawa Partner Support team. It is meant to augment – not supersede manuals or documentation from motoman.com. Please contact the Partner Support team at partnersupport@motoman.com for updates or clarification.

2. Upgrade the security to “MANAGEMENT MODE” by selecting [SYSTEM]-[SECURITY]

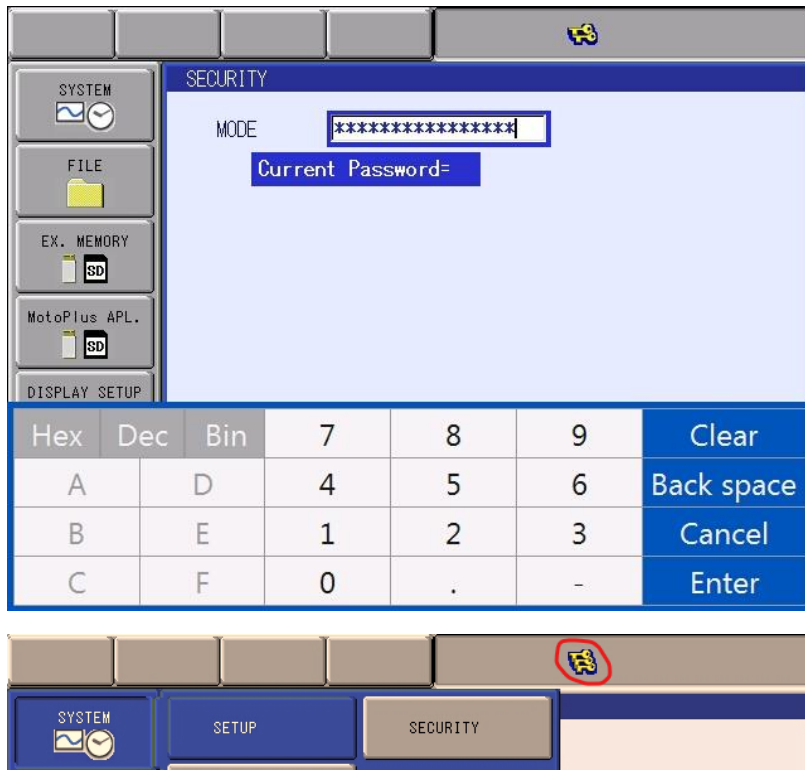


Press SELECT to open the security list, cursor to highlight MANAGEMENT MODE and press SELECT.



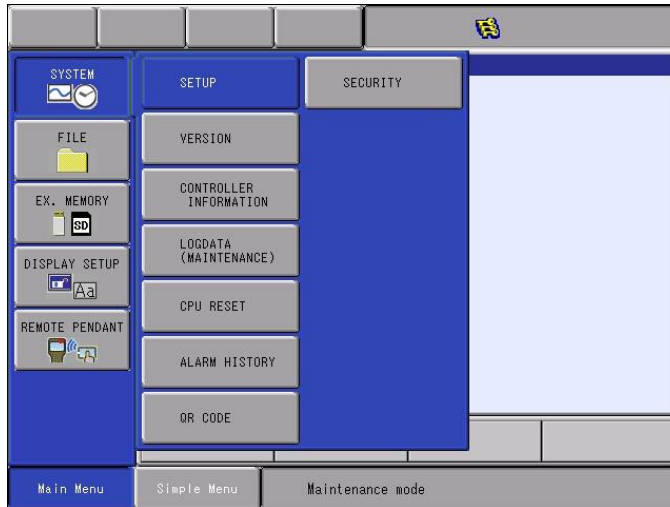
This document captures ideas, experiences, and informal recommendations from the Yaskawa Partner Support team. It is meant to augment – not supersede manuals or documentation from motoman.com. Please contact the Partner Support team at partnersupport@motoman.com for updates or clarification.

Type all 9's for the password and press ENTER. You will then see 3 keys in the status display bar.



This document captures ideas, experiences, and informal recommendations from the Yaskawa Partner Support team. It is meant to augment – not supersede manuals or documentation from motoman.com. Please contact the Partner Support team at partnersupport@motoman.com for updates or clarification.

3. Select [SYSTEM]-[SETUP]

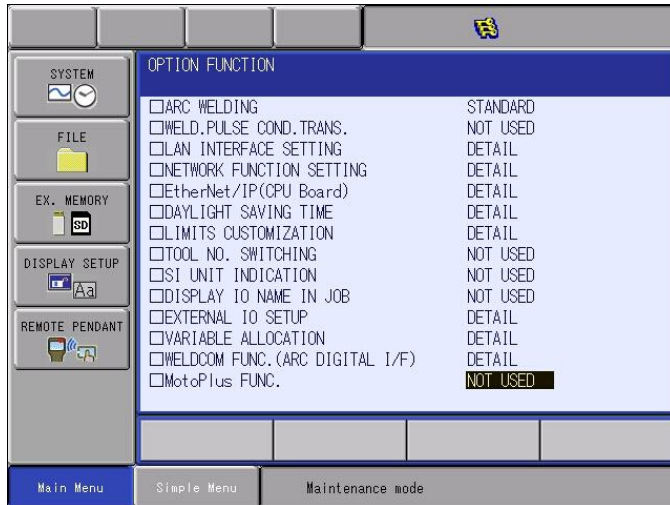


Cursor down to highlight [OPTION FUNCTION] and press SELECT.

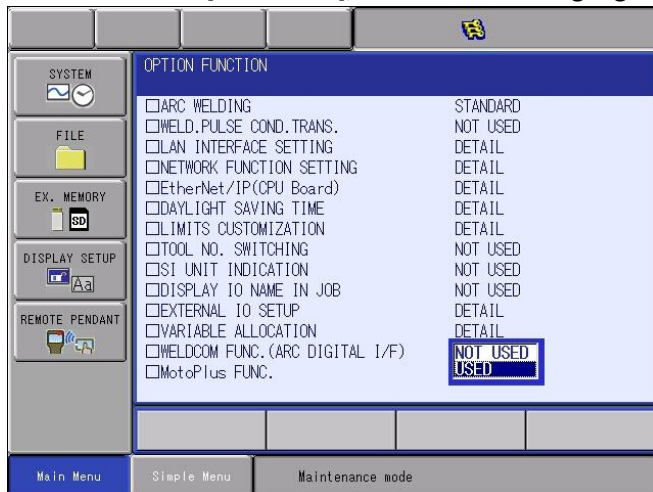


This document captures ideas, experiences, and informal recommendations from the Yaskawa Partner Support team. It is meant to augment – not supersede manuals or documentation from motoman.com. Please contact the Partner Support team at partnersupport@motoman.com for updates or clarification.

Cursor down to highlight [NOT USED] next to the MotoPlus FUNC.

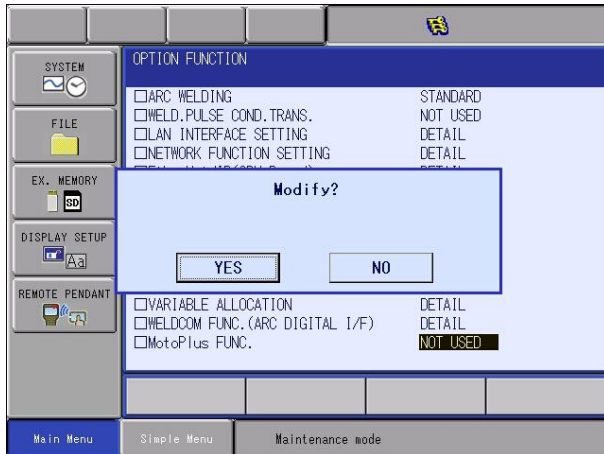


Press SELECT on [NOT USED], cursor down to highlight [USED], press SELECT.



This document captures ideas, experiences, and informal recommendations from the Yaskawa Partner Support team. It is meant to augment – not supersede manuals or documentation from motoman.com. Please contact the Partner Support team at partnersupport@motoman.com for updates or clarification.

You will then see a Modify? prompt. Select YES. There will be another prompt following. Select YES.



Verify

After following the above steps, you should now see a new menu entry labeled “MotoPlus APL”. on the Main Menu bar. You have successfully enabled the MotoPlus Function.

